



India Meteorological Department
(Ministry of Earth Sciences)

NATIONALBULLETIN NO.: 02 (BOB/05/2024)

TIME OF ISSUE: 0230 HOURS IST

DATED: 14.09.2024

FROM: INDIA METEOROLOGICAL DEPARTMENT (FAX NO. 24643965/24699216/24623220)
TO: CONTROL ROOM, NDM, MINISTRY OF HOME AFFAIRS (FAX.NO. 23093750)
CONTROL ROOM NDMA (FAX.NO. 26701729)
CABINET SECRETARIAT (FAX.NO.23012284, 23018638)
PS TO HON'BLE MINISTER FOR S & T AND EARTH SCIENCES (FAX NO.23316745)
SECRETARY, MOES (FAX NO. 24629777)
H.Q. (INTEGRATED DEFENCE STAFF AND CDS) (FAX NO. 23005137/23005147)
DIRECTOR GENERAL, DOORDARSHAN (23385843)
DIRECTOR GENERAL, AIR (23421105, 23421219)
PIB MOES (FAX NO. 23389042)
UNI (FAX NO. 23355841)
D.G. NATIONAL DISASTER RESPONSE FORCE (NDRF) (FAX NO. 26105912, 2436 3260)
DIRECTOR, PUNCTUALITY, INDIAN RAILWAYS (FAX NO. 23388503)
CHIEF SECRETARY, JHARKHAND (FAX NO. 0651-2400255)
CHIEF SECRETARY, BIHAR (FAX NO. 0612-2217085)
CHIEF SECRETARY, WEST BENGAL (FAX NO. 033-22144328)
CHIEF SECRETARY, ODISHA (FAX NO. 0674-2536660)
CHIEF SECRETARY, CHHATTISGARH (FAX NO. 0771-2221206)
CHIEF SECRETARY, TRIPURA (FAX NO. 0381-2414013, 2413200)
CHIEF SECRETARY, MIZORAM (FAX NO. 0389-2322745, 2320588)
CHIEF SECRETARY, ASSAM (FAX NO. 0361-2260900)
CHIEF SECRETARY, MEGHALAYA (FAX NO. 0364-2225978)

Sub: Depression crossed Bangladesh coast

The depression over northeast Bay of Bengal moved west-northwestwards with a speed of 8 kmph during past 6 hours, crossed Bangladesh coast between 2230-2330 hrs IST of yesterday, the 13th September close to Patuakhali (Bangladesh) and lay centred at 2330 hrs IST of yesterday, the 13th September 2024, over coastal Bangladesh close to Patuakhali (Bangladesh), near latitude 22.3° N and longitude 90.4° E, 180 km east of Canning (West Bengal) and 210 km east of Kolkata (West Bengal).

It is likely to move west-northwestwards across coastal Bangladesh and Gangetic West Bengal during next 48 hours. The depression is under continuous surveillance by the Doppler Weather Radar at Kolkata.

Forecast track and intensity are given in the following table:

Date/Time (IST)	Position (Lat. °N/ Long. °E)	Maximum Sustained Surface Wind Speed (Kmph)	Category Of Cyclonic Disturbance
13.09.24/2330	22.3/90.4	45-55 gusting to 65	Depression
14.09.24/0530	22.4/89.7	45-55 gusting to 65	Depression
14.09.24/1130	22.5/89.0	45-55 gusting to 65	Depression
14.09.24/1730	22.6/88.3	45-55 gusting to 65	Depression
14.09.24/2330	22.7/87.6	40-50 gusting to 60	Depression
15.09.24/1130	22.7/86.4	40-50 gusting to 60	Depression
15.09.24/2330	22.7/84.9	35-45 gusting to 55	Depression

Spatial rainfall distribution: Isolated: <25%, A few: 26-50%, Many: 51-75%, Most: 76-100%

Rainfall amount (mm): Heavy rain: 64.5 – 115.5, Very heavy rain: 115.6 – 204.4, Extremely heavy rain: 204.5 or more.

Warnings:

(i) Rainfall warning

Gangetic West Bengal (including Kolkata): Light to moderate rainfall at most places is very likely with **heavy to very heavy rainfall** at few places and **extremely heavy rainfall** at isolated places on 14th; **heavy to very heavy rainfall** at isolated places on 15th September.

Sub-Himalayan West Bengal: Light to moderate rainfall at most places is very likely with **heavy rainfall** at isolated places on 14th & 15th September.

Odisha: Light to moderate rainfall at most places is very likely with **heavy to very heavy rainfall** at a few places and **extremely heavy rainfall** at isolated places on 14th and **heavy to very heavy rainfall** at isolated places on 15th September.

Jharkhand: Light to moderate rainfall at most places with **heavy to very heavy rainfall** at isolated places on 14th & 15th September.

Bihar: Light to moderate rainfall at most places with **heavy rainfall** at isolated places very likely on 14th & 15th September.

Chhattisgarh: Light to moderate rainfall at most places with isolated **heavy rainfall** on 14th & 15th September and **heavy to very heavy rainfall** at isolated places on 16th September.

Mizoram & Tripura: Light to moderate rainfall at most places is very likely with isolated **heavy rainfall** on 14th September.

Assam & Meghalaya: Light to moderate rainfall at many places is very likely with isolated **heavy rainfall** on 14th & 15th September.

(ii) Flash Flood Guidance: (Graphics Attached)

24 hours Outlook for the Flash Flood Risk (FFR) till 1730 IST of 14-09-2024:

Moderate to High flash flood risk likely over few watersheds & neighbourhoods of following Met Sub-divisions during next 24 hours.

Gangetic West Bengal - Bankura, Bardhaman, Birbhum, East and West Medinipur, Howrah, Hoogly, Kolkata, Murshidabad, Nadia, and North & South 24 Parganas districts.

Odisha - Baleswar, Mayurbhanj and Sundargarh districts.

Jharkhand - Deoghar, Dumka, East Singhbhum, Godda, Pakur and Sahebganj districts.

Mizoram and Tripura - Chandel, Ukhrul, Lawngtlai, Lunglei, Saiha, Serchhip and South Tripura districts
Surface runoff/ Inundation may occur at some fully saturated soils & low-lying areas over Area of Concern as shown in map due to expected rainfall occurrence in next 24 hours.

(iii) Wind warning:

Squally wind speed reaching 45-55 kmph gusting to 65 kmph is prevailing over north Bay of Bengal and along & off Bangladesh, West Bengal, and north Odisha coasts. It is likely to continue so till evening of 14th September. It is likely to decrease, gradually becoming 40-50 kmph gusting to 60 kmph by morning of 15th September.

Squally wind speed reaching 35-45 kmph gusting to 55 kmph likely over Gangetic west Bengal (including Kolkata) and adjoining north Odisha during 14th & 15th September and over Jharkhand on 15th and 16th September.

(iv) Sea Condition:

Rough to very rough sea condition is very likely to prevail over north Bay of Bengal and along & off West Bengal-Odisha coasts till morning of 16th September.

(iv) Fishermen Warning:

Fishermen are advised not to venture into north Bay of Bengal and along & off Bangladesh, West Bengal, and Odisha coasts till morning of 16th September.

Spatial rainfall distribution: Isolated: <25%, A few: 26-50%, Many: 51-75%, Most: 76-100%

Rainfall amount (mm): Heavy rain: 64.5 – 115.5, Very heavy rain: 115.6 – 204.4, Extremely heavy rain: 204.5 or more.

Impact Expected (Gangetic West Bengal (including Kolkata), Odisha, Bihar, Jharkhand, Chhattisgarh, Mizoram, and Tripura due to heavy rainfall)

- ✓ Localized Flooding of roads, water logging in low lying areas and closure of underpasses mainly in urban areas of the above region.
- ✓ Occasional reduction in visibility due to heavy rainfall.
- ✓ Disruption of traffic in major cities and roadways due to water logging in roads and poor visibility due to heavy rain leading to increased travel time and incidents
- ✓ Likely disruption of marine and inland water transportation like small boats and trawlers.
- ✓ Minor damage to kutch roads.
- ✓ Possibilities of damage to vulnerable structure.
- ✓ Localized Landslides/Mudslides/landslips/mud slips/land sinks/mud sinks.
- ✓ Damage to horticulture and standing crops in some areas due to inundation and wind.
- ✓ It may lead to riverine flooding in some river catchments (for riverine flooding please visit Web page of CWC)

Action Suggested (Gangetic West Bengal, Odisha, Bihar, Jharkhand, Chhattisgarh, Mizoram, and Tripura due to heavy rainfall)

- ✓ Fishermen are advised not to venture into north Bay of Bengal from 14th to 16th September morning.
- ✓ Judicious regulation of surface transports including railways and roadways and onshore/offshore activities.
- ✓ Check for traffic congestion on your route before leaving for your destination.
- ✓ Follow any traffic advisories that are issued in this regard.
- ✓ Avoid going to areas that face the water logging problems often.
- ✓ Avoid staying in vulnerable structure.

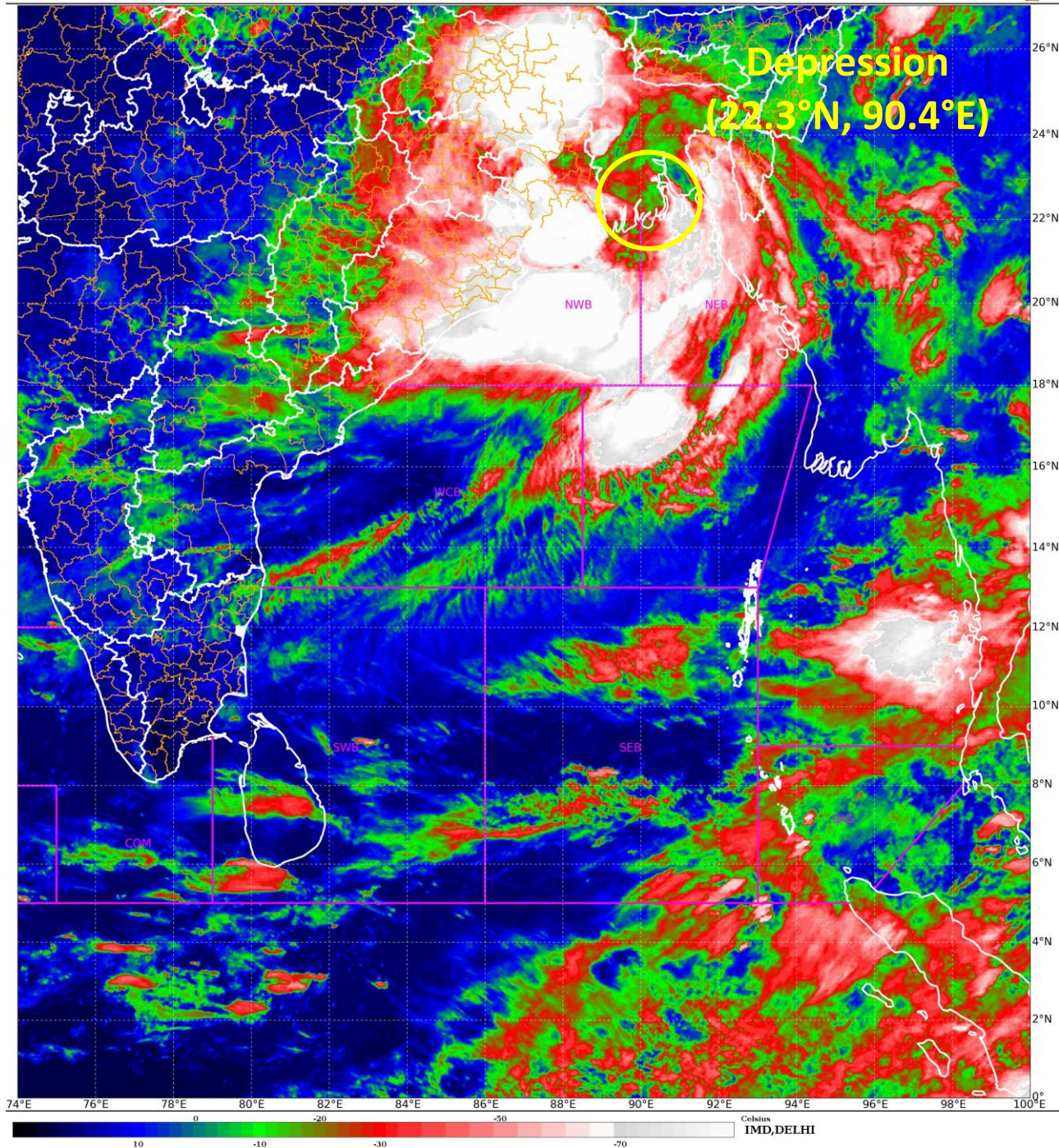
Agromet advisories for Heavy Rainfall likely over various parts of the country

- ✓ Provide mechanical support to horticultural crops & staking to vegetables.
- ✓ Keep the harvested produce at safer place.

The next bulletin will be issued at 0830 hrs IST of today, the 14th September, 2024.

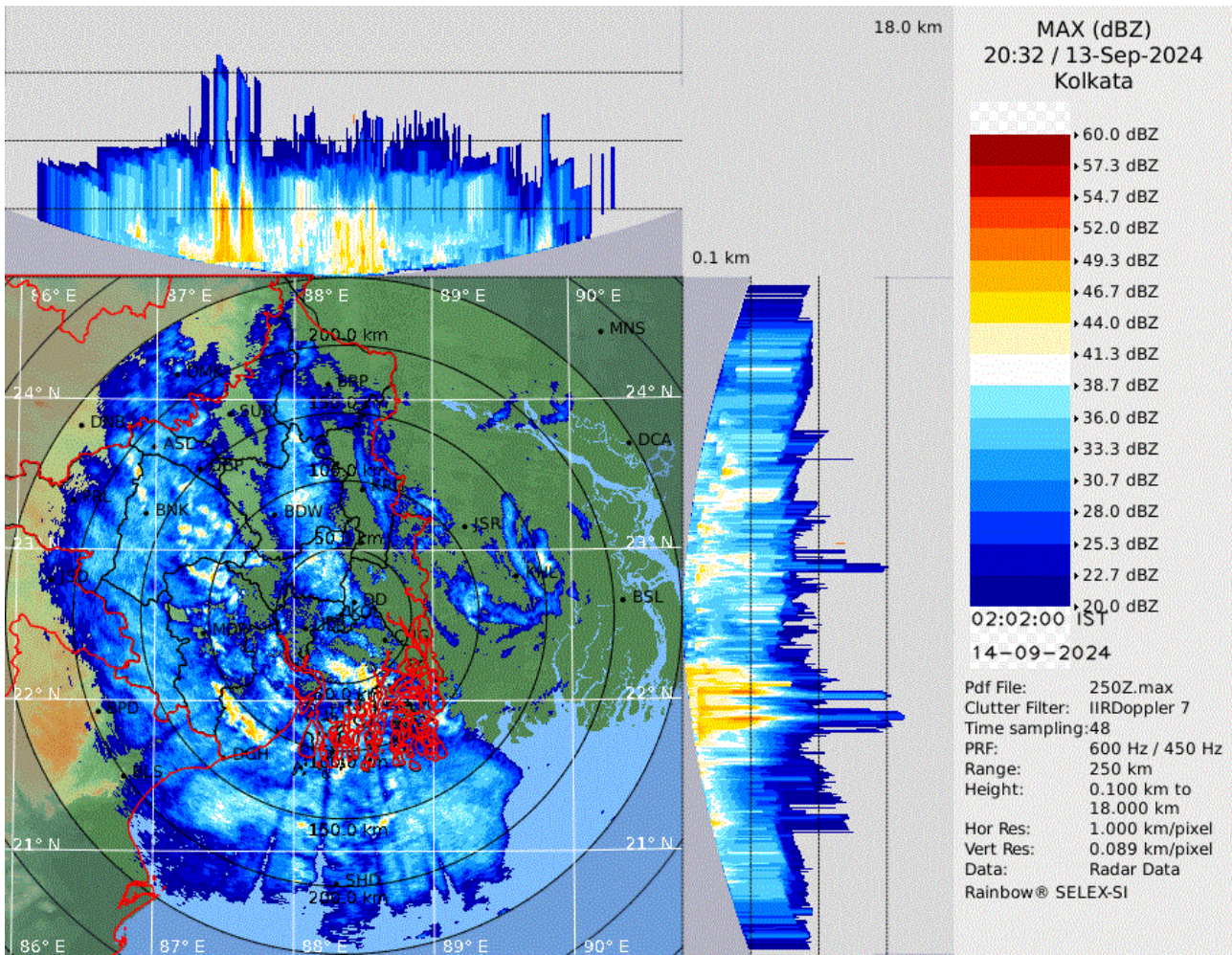
(Dr Shashi Kant)
Scientist-D, RSMC, New Delhi

Copy to: CRS, Pune/RMC Chennai /RMC Kolkata/RMC Guwahati/MC Bhubaneswar/MC Ranchi/MC Patna/MC Raipur/ MC Agartala/ MC Shillong/MC Aizawl



Spatial rainfall distribution: Isolated: <25%, A few: 26-50%, Many: 51-75%, Most: 76-100%
Rainfall amount (mm): Heavy rain: 64.5 – 115.5, Very heavy rain: 115.6 – 204.4, Extremely heavy rain: 204.5 or more.

Kolkata Radar Image

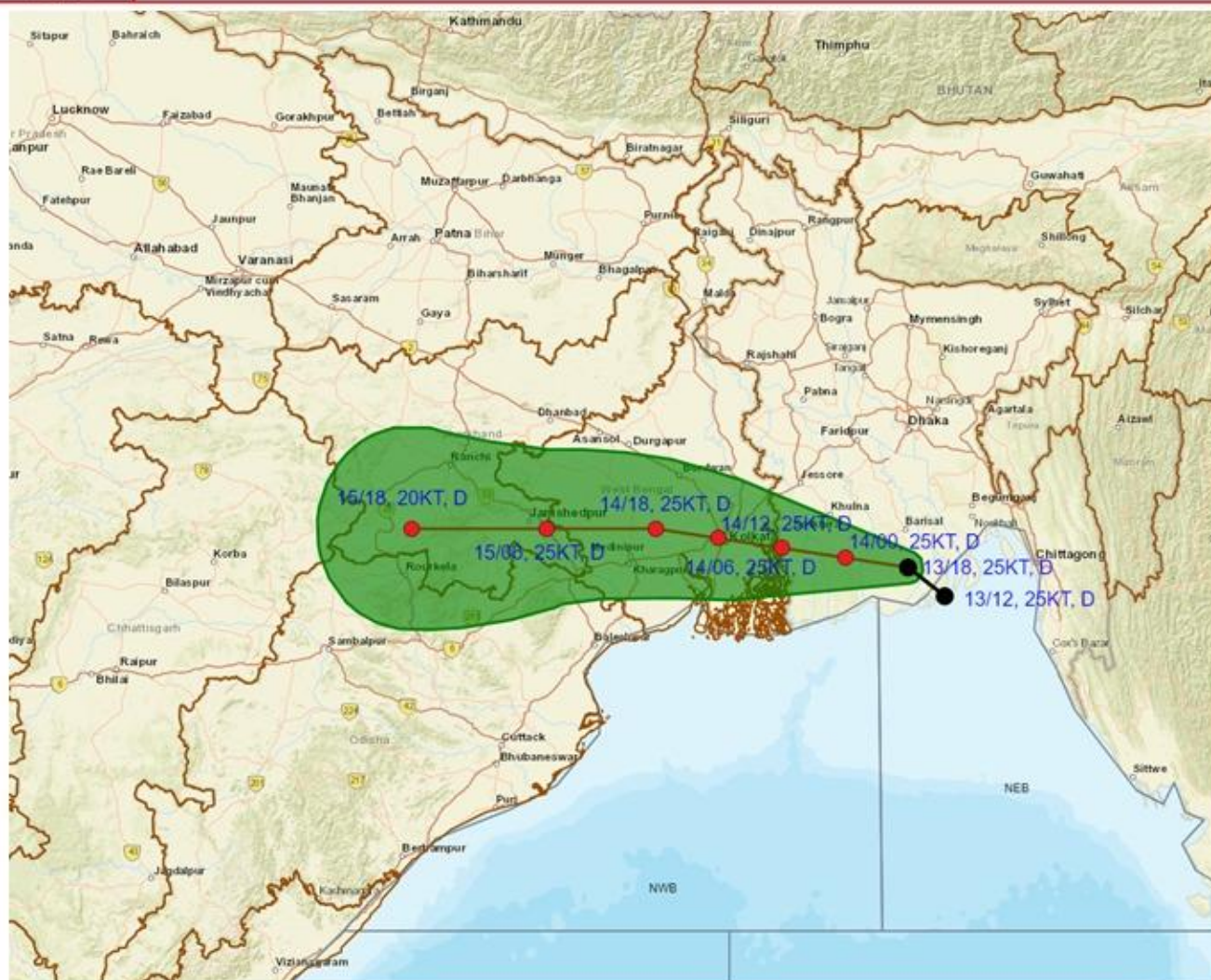


Spatial rainfall distribution: Isolated: <25%, A few: 26-50%, Many: 51-75%, Most: 76-100%

Rainfall amount (mm): Heavy rain: 64.5 – 115.5, Very heavy rain: 115.6 – 204.4, Extremely heavy rain: 204.5 or more.



**OBSERVED AND FORECAST TRACK OF DEPRESSION OVER COASTAL BANGLADESH
BASED ON 1800 UTC (2330 IST) OF 13TH SEPTEMBER, 2024.**

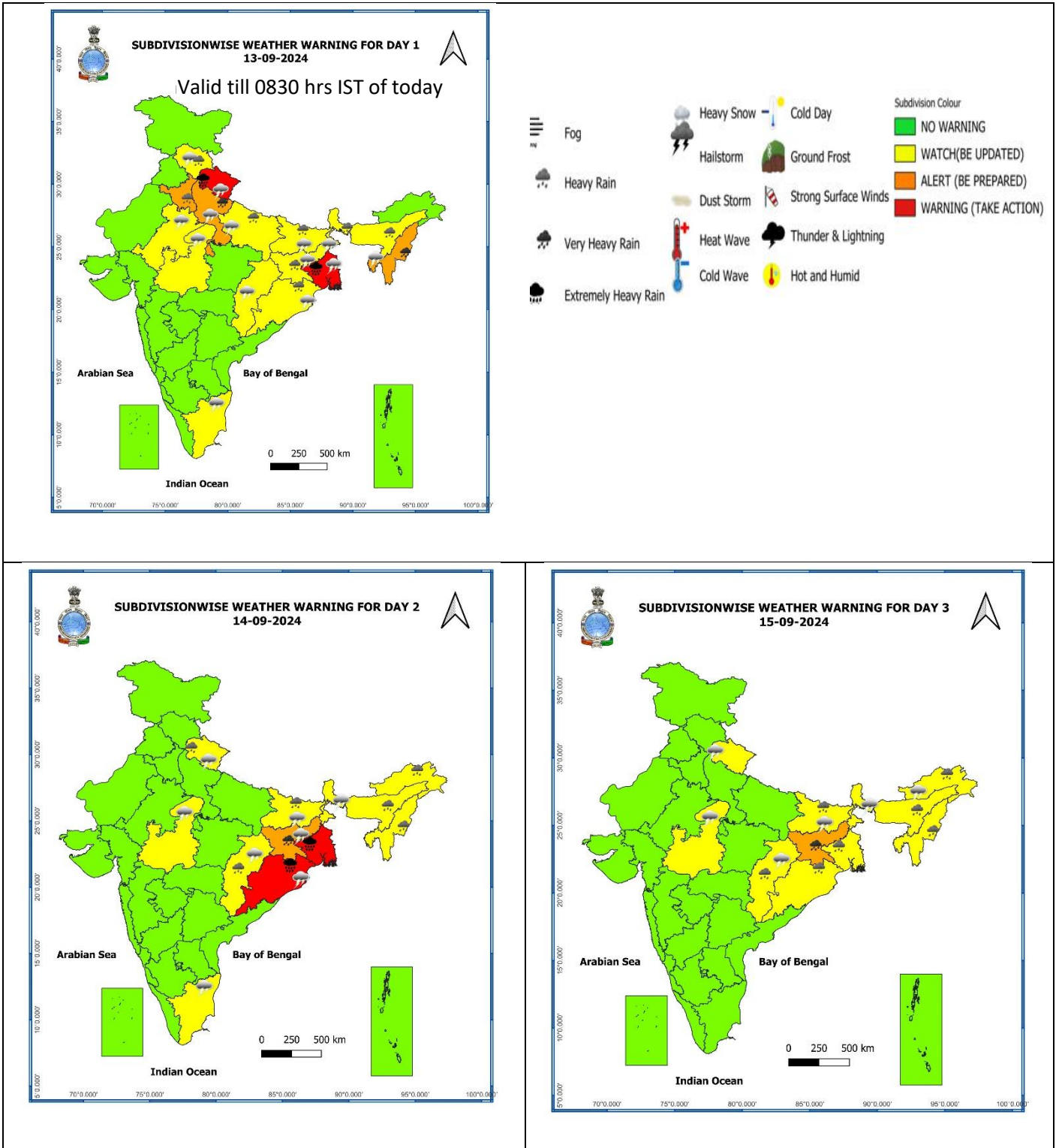


DATE/TIME IN UTC
IST=UTC + 0530
L: LOW PRESSURE AREA
WML: WELL MARKED LOW PRESSURE AREA
D: DEPRESSION (17-27 KT)
DD: DEEP DEPRESSION (28-33 KT)
CS: CYCLONIC STORM (34-47 KT)
SCS: SEVERE CYCLONIC STORM (48-63KT)
VSCS: VERY SEVERE CYCLONIC STORM (64-89 KT)
ESCS: EXTREMELY SEVERE CYCLONIC STORM (90-119 KT)
SuCS: SUPER CYCLONIC STORM (≥ 120 KT)

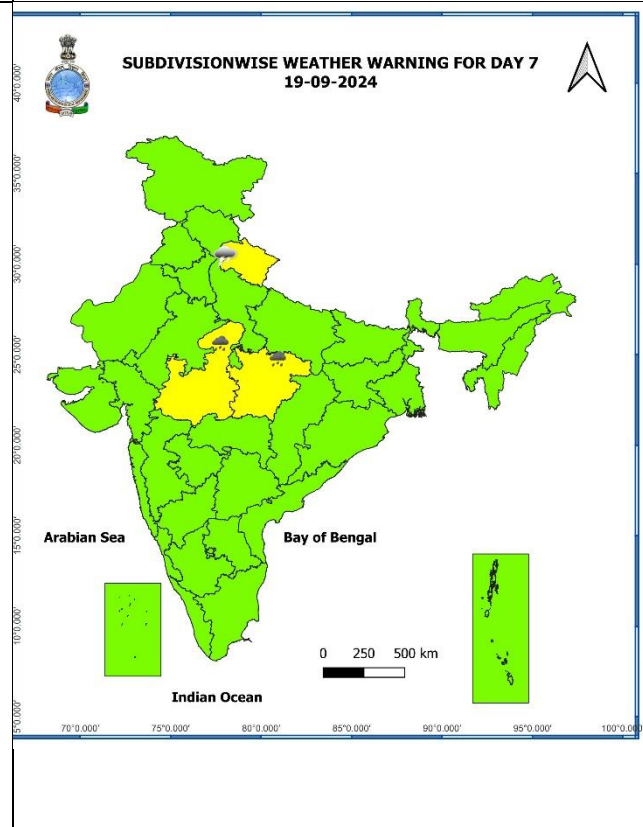
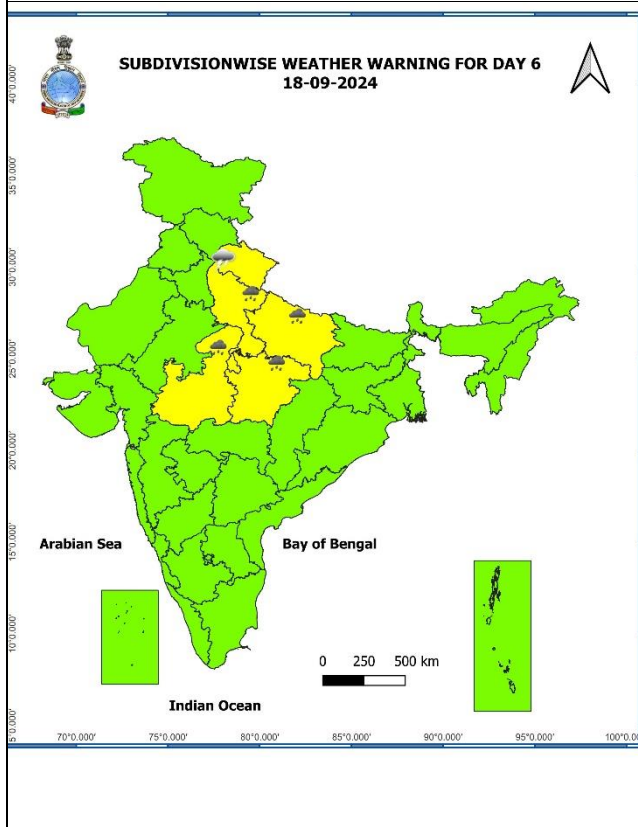
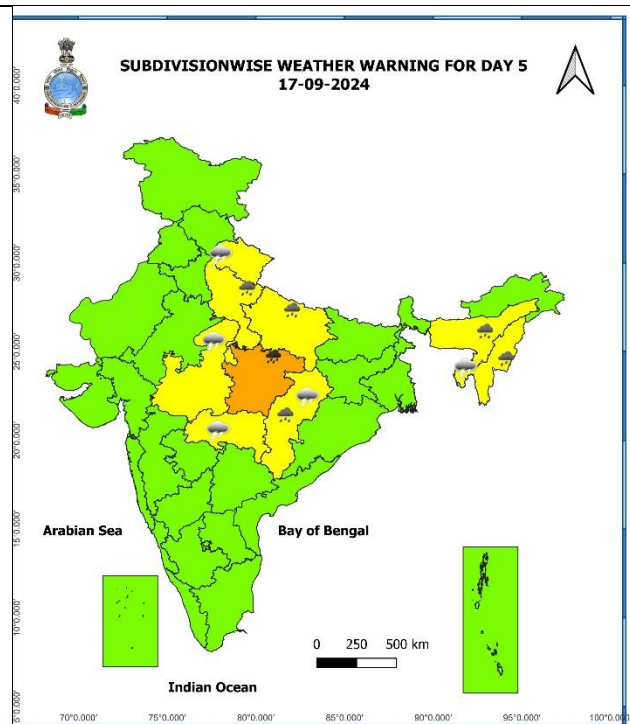
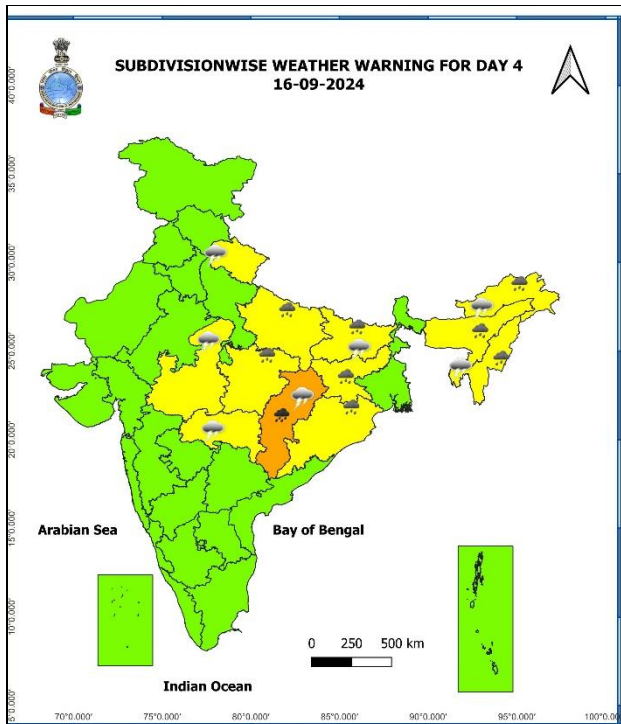
- LESS THAN 34 KT
- 34-47 KT
- ≥ 48 KT
- OBSERVED TRACK
- FORECAST TRACK
- CONE OF UNCERTAINTY

Spatial rainfall distribution: Isolated: <25%, A few: 26-50%, Many: 51-75%, Most: 76-100%
Rainfall amount (mm): Heavy rain: 64.5 – 115.5, Very heavy rain: 115.6 – 204.4, Extremely heavy rain: 204.5 or more.

Warning Graphics



Spatial rainfall distribution: Isolated: <25%, A few: 26-50%, Many: 51-75%, Most: 76-100%
Rainfall amount (mm): Heavy rain: 64.5 – 115.5, Very heavy rain: 115.6 – 204.4, Extremely heavy rain: 204.5 or more.



- Action may be taken based on **ORANGE AND RED COLOUR** warnings.
- Vulnerable regions likely urban and hilly areas action may be initiated for heavy rainfall warning.
- As the lead period increases forecast accuracy decreases

Spatial rainfall distribution: Isolated: <25%, A few: 26-50%, Many: 51-75%, Most: 76-100%
 Rainfall amount (mm): Heavy rain: 64.5 – 115.5, Very heavy rain: 115.6 – 204.4, Extremely heavy rain: 204.5 or more.

Flash Flood Guidance

4 hours Outlook for the Flash Flood Risk (FFR) till 1730 IST of 14-09-2024 :

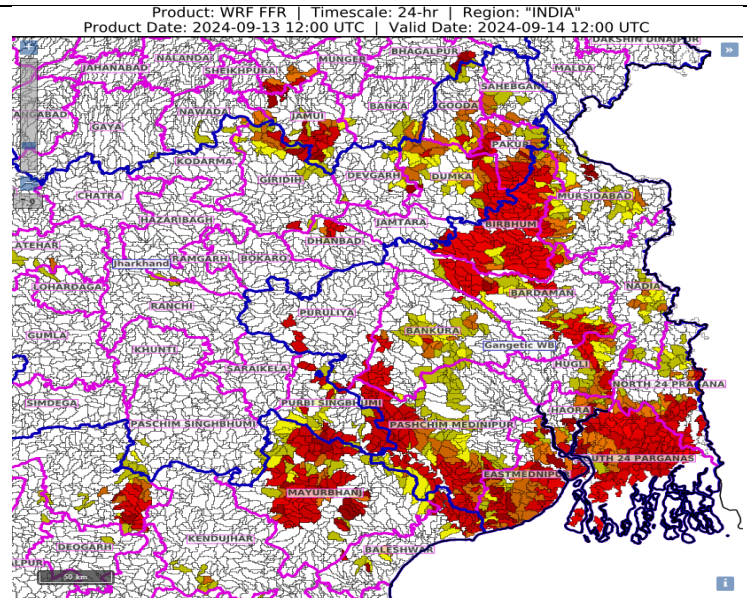
Moderate to High flash flood risk likely over few watersheds & neighbourhoods of following Met Sub-divisions during next 24 hours.

Odisha - Baleshwar, Mayurbhanj and Sundargarh districts.

Gangetic West Bengal - Bankura, Bardhaman, Birbhum, East & West Mednipur, Howrah, Hoogly, Kolkata, Mursidabad, Nadia, and North and South Parganas districts.

Jharkhand - Deoghar, Dumka, East Singhbhum, Godda, Pakur and Sahebganj districts.

Surface runoff/ Inundation may occur at some fully saturated soils & low-lying areas over Area of Concern as shown in map due to expected rainfall occurrence in next 24 hours.

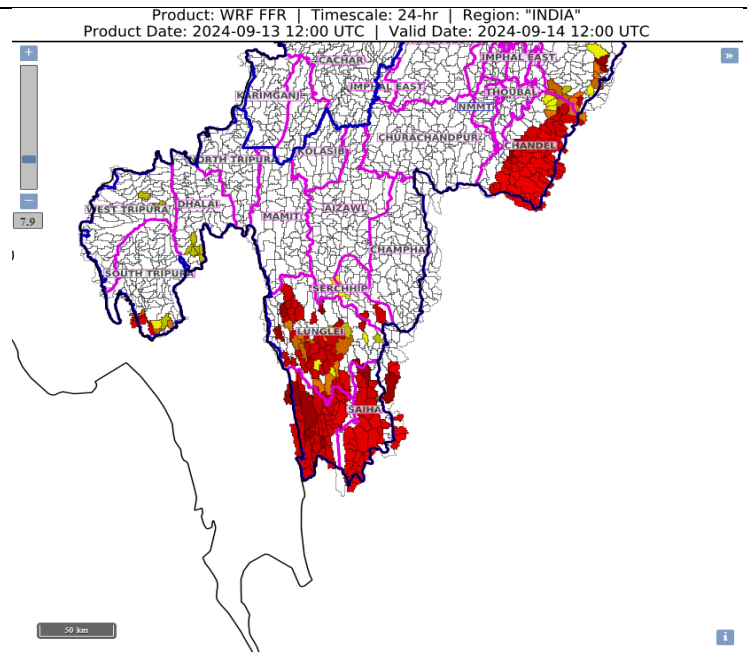


24 hours Outlook for the Flash Flood Risk (FFR) till 1730 IST of 14-09-2024 :

Moderate to High flash flood risk likely over few watersheds & neighbourhoods of following Met Sub-divisions during next 24 hours.

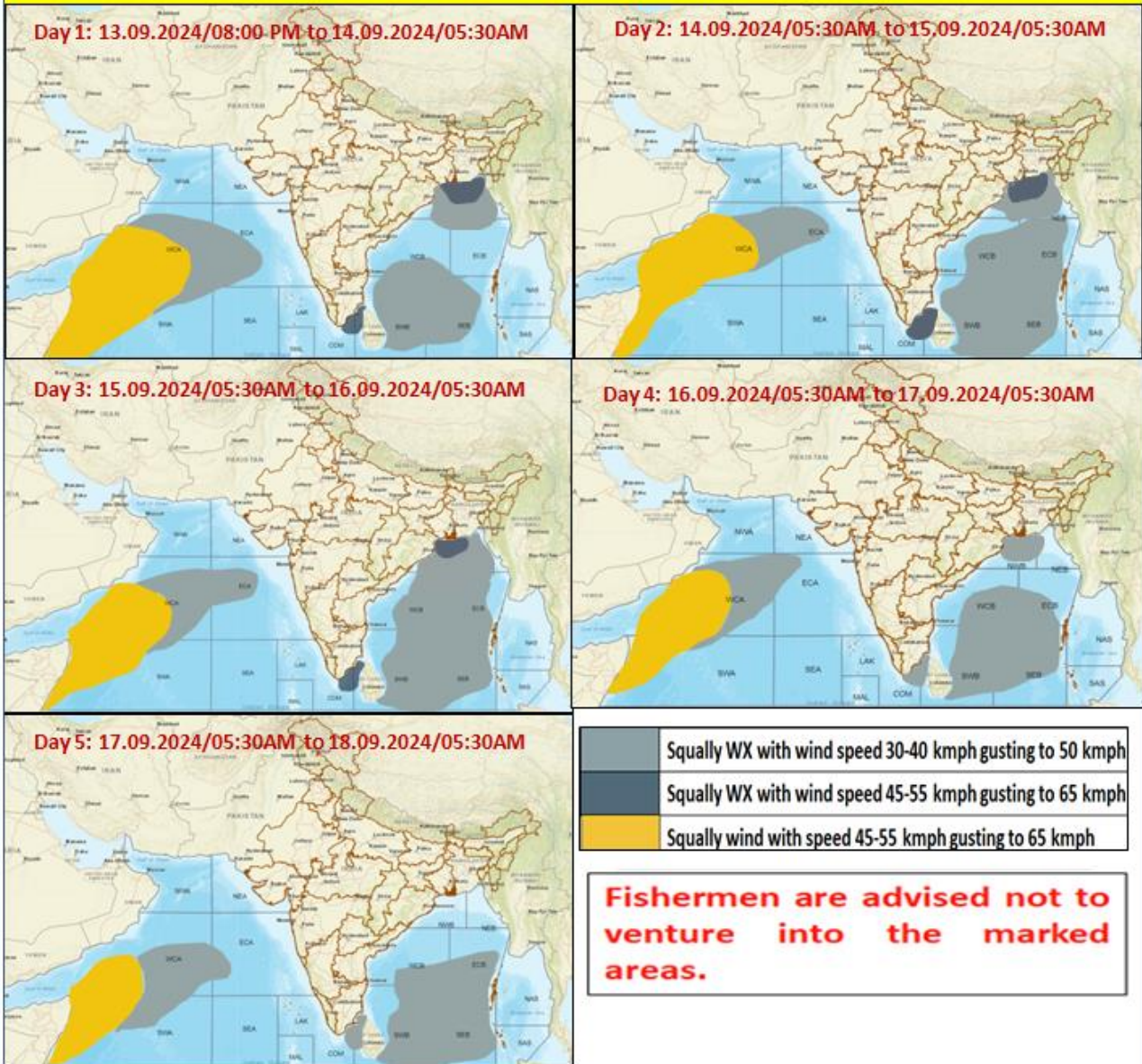
Mizoram and Tripura - Chandel, Ukhrlu, Lawngtlai, Lunglei, Saiha, Serchhip and South Tripura districts.

Surface runoff/ Inundation may occur at some fully saturated soils & low-lying areas over Area of Concern as shown in map due to expected rainfall occurrence in next 24 hours.



Spatial rainfall distribution: Isolated: <25%, A few: 26-50%, Many: 51-75%, Most: 76-100%
Rainfall amount (mm): Heavy rain: 64.5 – 115.5, Very heavy rain: 115.6 – 204.4, Extremely heavy rain: 204.5 or more.

Fishermen Warning Graphics



Spatial rainfall distribution: Isolated: <25%, A few: 26-50%, Many: 51-75%, Most: 76-100%
Rainfall amount (mm): Heavy rain: 64.5 – 115.5, Very heavy rain: 115.6 – 204.4, Extremely heavy rain: 204.5 or more.